



**new!** The Deluxe Inclinometer features new technology that reduces sensitivity to vertical positioning and fluid dampening to permit faster, accurate readings without waiting for oscillations to damp out. A larger 3" dial provides readings to one degree. Ideal for use with the CROM and the BROM II, the Deluxe Inclinometer also features:

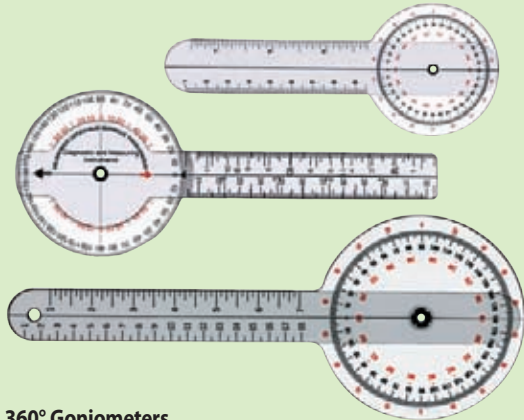
- A short base for measuring areas of the spine and small surfaces like the hand
- A long base that allows the patient to hold the Inclinometer base for easier measurement of extremities

Deluxe Inclinometer (#307)

**Universal Inclinometer**

Quick and easy upper and lower range-of-motion measurements can be taken with this readily adjustable tool. Now available with three interchangeable bases: a straight edge for long surfaces (arms, legs, fingers), a footed base for curved surfaces (wrist, ankle) and spine-specific base. Works in conjunction with CROM and BROM II for producing consistently accurate and repeatable measurements.

Universal Inclinometer (#305)



**360° Goniometers**

Made of clear, durable plastic. Goniometer arm has a linear scale in both centimeters and inches. Available in 6", 8" or 12" sizes.

- 6" Goniometer (#GON06)
- 8" Goniometer (#GON08)
- 12" Goniometer (#GON12)

**CROM**

Use the CROM (Cervical Range-Of-Motion Instrument) to easily and quickly obtain accurate, objective, repeatable measurements of cervical movement.

The CROM combines magnets with AMA-required inclinometers. It eliminates slippage, positioning, zeroing and tracking errors common with stand-alone inclinometers, plus it allows measurement of rotation movements in the upright position.

Use the CROM to document:

- Standard measurements
- Sub-occipital flexion and extension
- Forward head measurements (deluxe only)

The lightweight CROM secures comfortably with hook-and-loop straps. Both basic and deluxe models include an instructional DVD, normal values, magnetic yoke and storage case.

CROM Basic (#301)

CROM Deluxe: includes forward head unit, extra nose piece, tape measure and deluxe case (#302)



The CROM inclinometers as required by the AMA.



The rotation/lateral flexion unit is designed to easily track patient movement and compensates for hip movement

**BROM II**

The BROM II is superior to 'stand alone' inclinometers because it measures flexion, extension, rotation and pelvic tilt without the positioning, zeroing, or tracking errors that are common to these instruments. Like the CROM, the BROM II (Back Range-of-Motion) combines inclinometers and magnets for consistently accurate and repeatable measurements. Includes an instructional DVD.

BROM II (#303)

**new!** CROM 3

The next generation of the device that set the standard for cervical range of motion measurement, the CROM 3 utilizes a ball indicator technology that reduces sensitivity to vertical orientation. Like the original CROM, the CROM 3 is located to anatomical landmarks with inclinometers zeroed to the instrument frame eliminating initial head positioning errors. A magnetic yoke placed on the shoulder provides a reference for the compass readings and allows measurements to be made in the preferred upright position. Straps securing the frame to the head eliminate tracking errors since the inclinometers will not slip in reference to the head during measurements.

The CROM 3 retains all the features of the original CROM and Universal Inclinometer with a number of improvements including:

- Larger, easier to read 3" dial that provides accurate readings in one degree increments
- Improved location of sagittal and rotation meters
- A long base used for measuring arm rotation, flexion and extension
- Forward Head Measuring Unit option

CROM 3 (#306)

Each CROM comes complete with Norms. Normal value articles are available upon request.



Optional Forward Head Measuring Unit





**The DVD Atlas of Human Anatomy Series**

This highly recommended DVD series by Robert Acland, FRCS, offers high quality 3-D images of real human anatomy. The entire series was filmed in a lab using unembalmed cadavers with dissections and prosections making up 80% of the content. Muscle, tendon and joint movements are shown as well. Each DVD follows the same format with easy navigation. Approximately 150 minutes each.

**The DVD Atlas of Human Anatomy Series:**

- The Upper Extremity (#901DVD)*
- The Lower Extremity (#902DVD)*
- The Trunk (#903DVD)*
- The Head & Neck- Part 1 Muscle & Structure (#904DVD)*
- The Head & Neck- Part 2 Blood Vessels & Organs (#905DVD)*

**The PALM**

Use the PALM (Palpation Meter) for fast, accurate, objective, repeatable measurements.

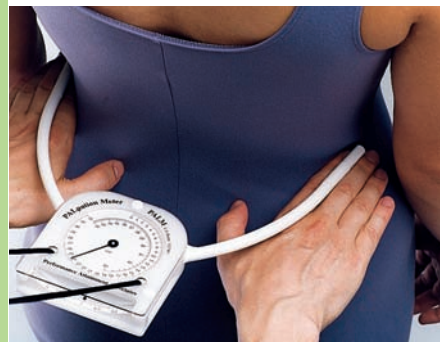
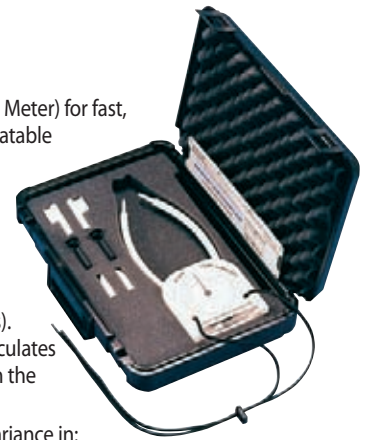
The combination caliper/inclinometer measures both the distance and the angle between the clinician's fingers (palpation points). The PALM's slide rule calculates relative heights between the two points.

The PALM documents variance in:

- Functional and structural short leg length
- Chest wall expansion
- Pelvic rotation
- ASIS's and PSIS's
- AC joints, etc.

The PALM includes 3 different palpation tips and instructions.

The PALM (#304)



**Anatomical Models**

Authentic quality and anatomical detail are assured with OPTP's Anatomical Models.

**A) Flexible Spine with Femur Heads and Stand**

A complete spine designed for hands-on demonstrations. Features full pelvis and occipital plate, flexible mounting, L3-L4 disc prolapsed spinal nerve exits and cervical vertebral artery. Stand included.

Flexible Spine with Femur Heads and Stand/83cm high (#227)

**B) Functional Shoulder Joint** consists of shoulder blade, collar bone, portion of humerus and joint ligaments. Fully flexible. Includes stand.

Functional Shoulder/16cm x 12cm x 20cm (#225)

**C) Functional Knee Joint** consists of portion of femur, tibia and portion of fibula. Also includes meniscus, patella with quadriceps tendon and joint ligaments. Fully flexible. Includes stand.

Functional Knee/12cm x 12cm x 34cm (#224)

**D) Lumbar Vertebrae with Interchangeable Discs**

Life-sized model demonstrates what a herniated disc looks like in relation to the vertebrae and the spinal cord. Included are 3 interchangeable discs: Normal, central herniation and dorsal herniation. Dissects into 6 parts.

Lumbar Vertebrae with Interchangeable Discs/ 12cm x 12cm x 12cm (#226)



**also see:** **Vertebral Simulator**  
Page 2